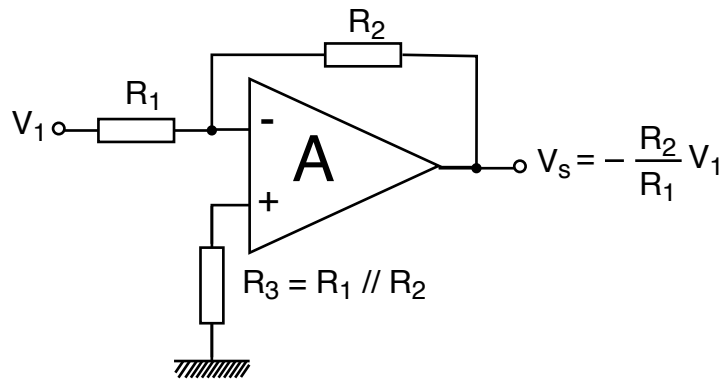
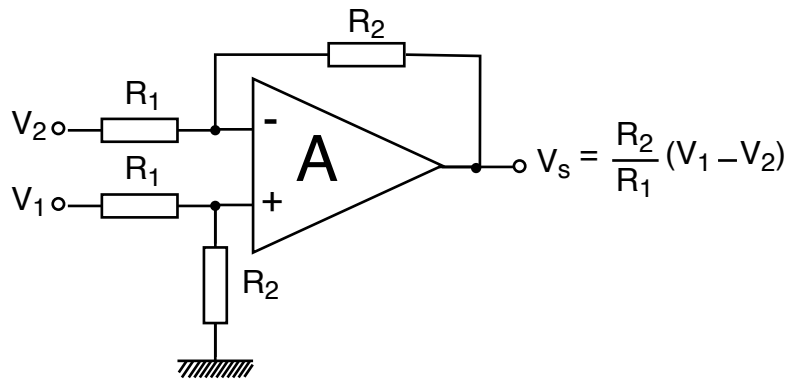


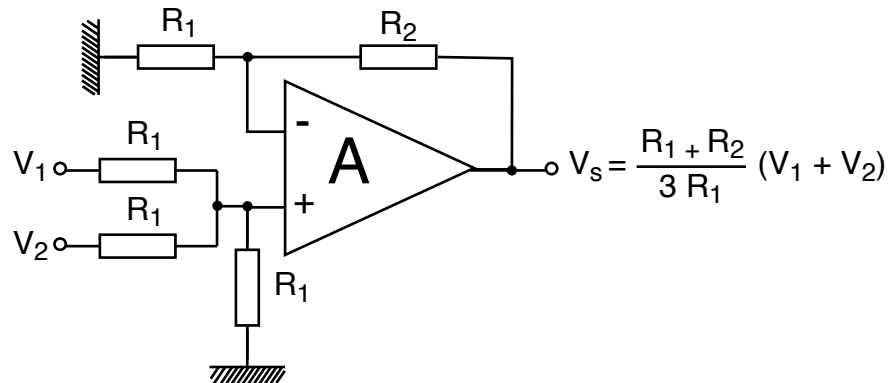
Montage inverseur



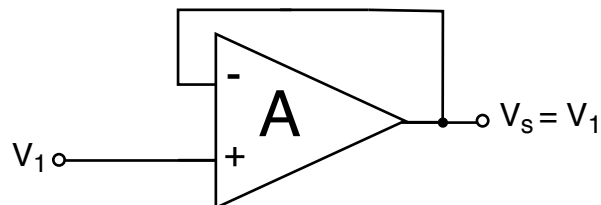
Montage soustracteur



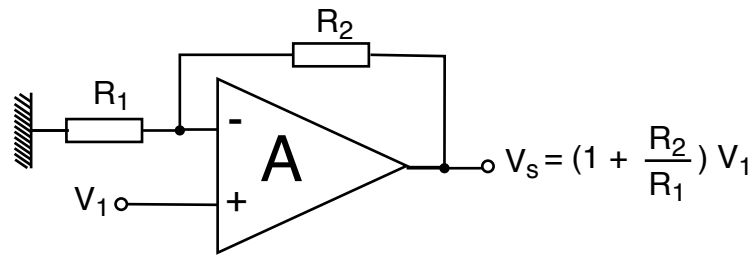
Montage additionneur



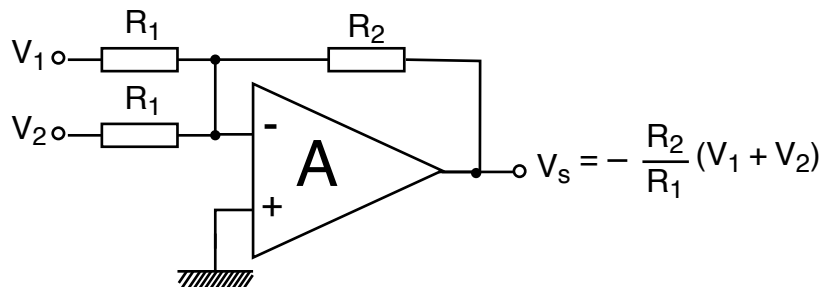
Montage suiveur



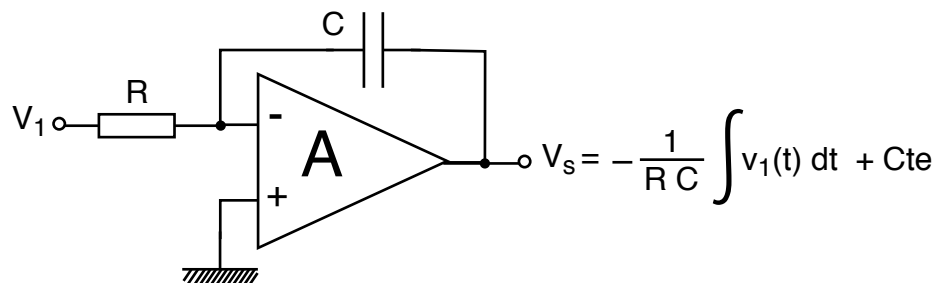
Montage non inverseur



Montage sommateur inverseur

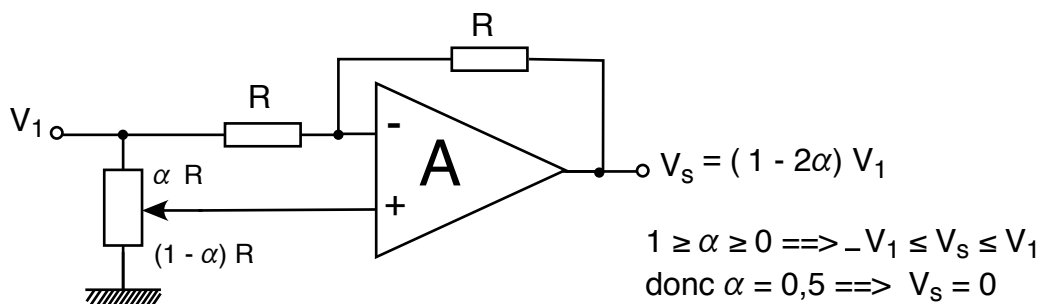


Montage intégrateur inverseur

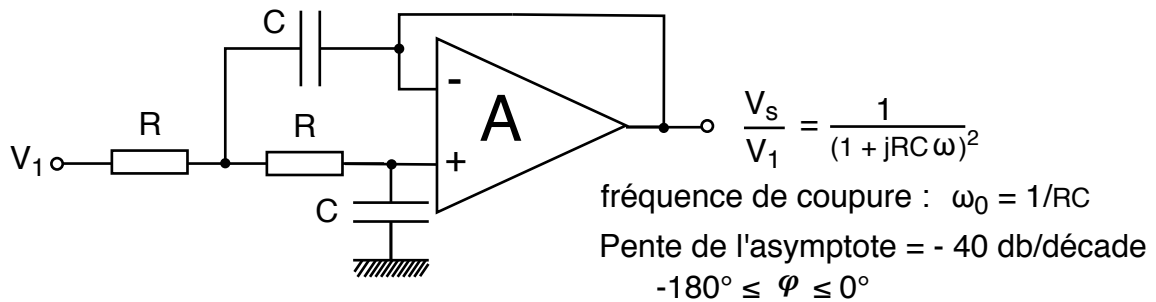


ou si V_1 est constante, on obtient une pente linéaire avec : $\frac{\Delta V_s}{\Delta t} = -\frac{V_1}{RC}$

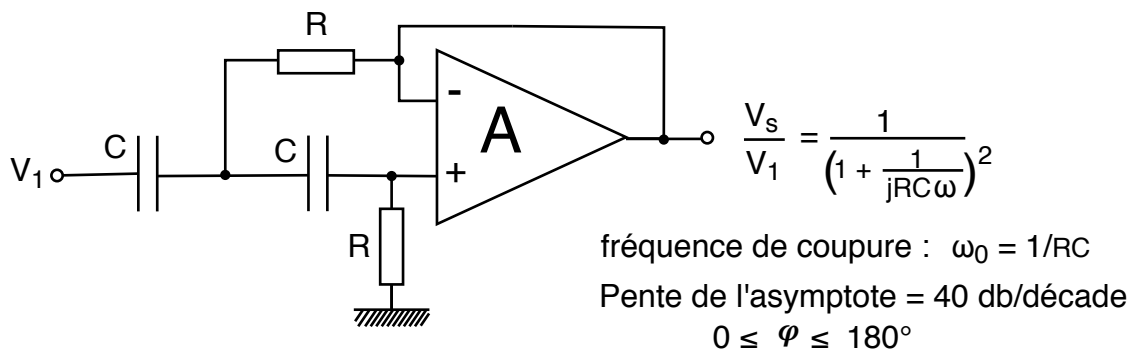
Montage changeur de phase



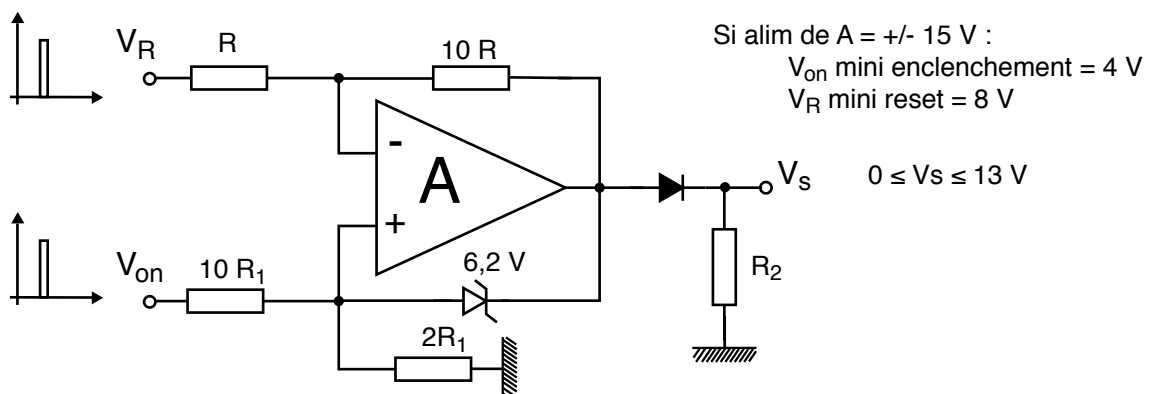
Filtre passe-bas d'ordre 2



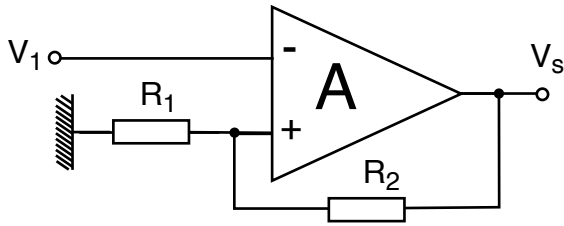
Filtre passe-haut d'ordre 2



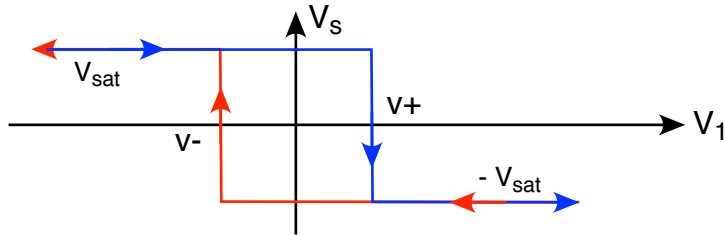
Bascule



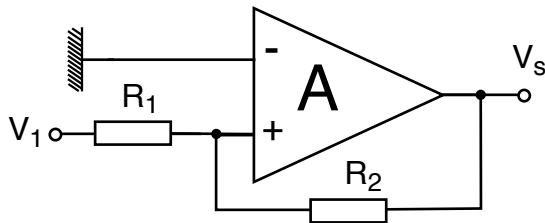
Trigger inverseur



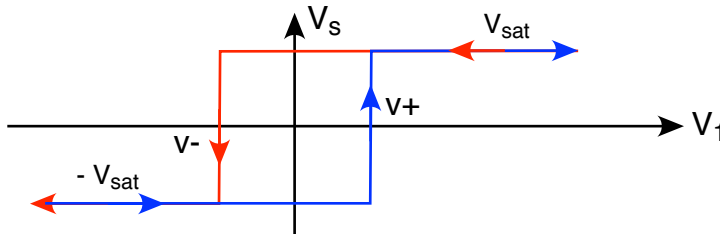
$$v_{+/-} = +/- \frac{R_1}{R_1 + R_2} V_{sat}$$



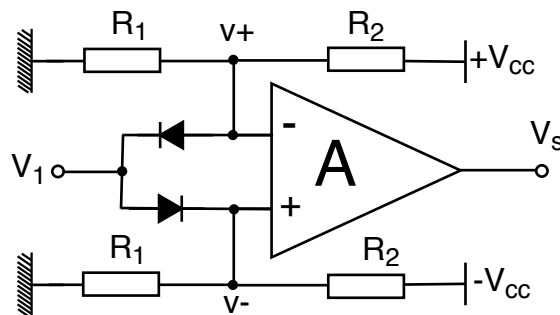
Trigger non inverseur



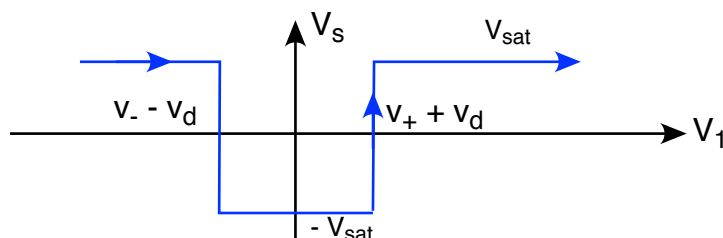
$$v_{+/-} = +/- \frac{R_1}{R_2} V_{sat}$$



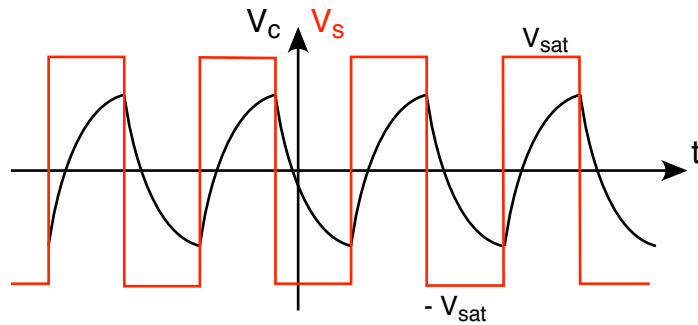
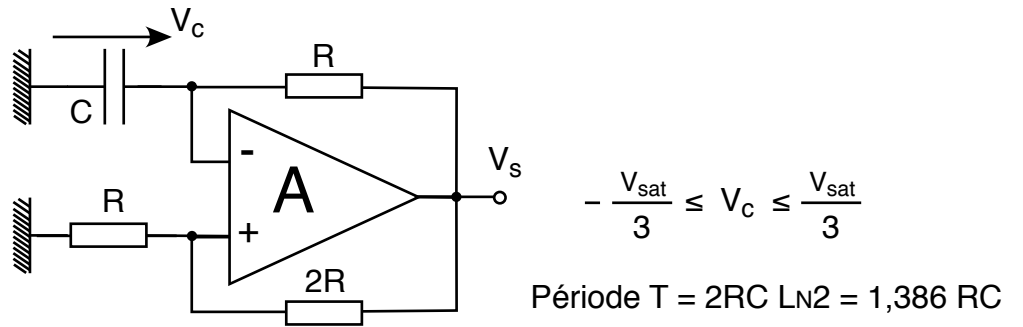
Comparateur à fenêtre



$$v_{+/-} = +/- \frac{R_1}{R_1 + R_2} V_{cc}$$



Montage astable - Oscillateur



Générateur de dents de scie

